

NEW ENGLANDER

Chess Club Update – Christmas 2008

Chairman's Chatter

The chess club closes on 24th and 31st December for the festive break. That, of course, is no excuse for letting your chess muscles be affected by the over-indulgence that will afflict the rest of your body. Here are a few problems to keep you in trim.

Good luck and Merry Christmas!

Paul Hanks

Chessmas Carol

Your frenzy is mounting. 25th December has arrived and you are excitedly opening your Christmas Presents. What surprise can that enticing envelope contain? Wow! Your scrooge-like uncle Chris Muspast tells you that he has parted with oodles of money for you to play a challenge game against world champion Vishy Anand. At last, here is your chance to unleash a chess masterpiece in the full glare of world publicity....

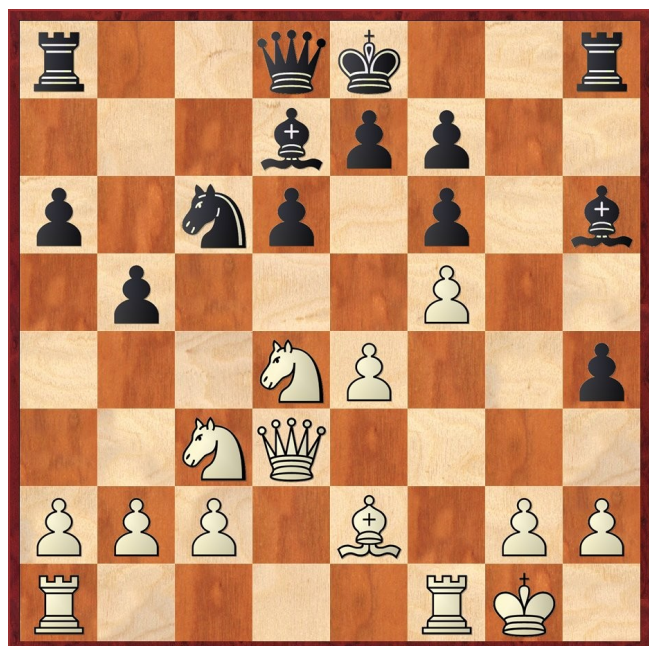
Unfortunately, many hopefuls at simultaneous displays see their money quickly vanish before their eyes when they succumb to a fairly simple tactical coup. Here is an example of the grandmaster showing superior alertness :

G Micalizzi v V Anand
Rome, 1990

1 e4 c5 2 Nf3 Nc6 3 d4 cxd4 4 Nxd4 Nf6 5 Nc3 d6 6 Bg5 Bd7 7 Qd2 a6

This game has a fair number of precedents but here, White mostly chooses 8 0-0-0. What difference will kingside castling make?

8 f4 b5 9 Bxf6 gxf6 10 f5 h5 11 Be2 h4 12 0-0 Bh6 13 Qd3



**13 ...
14 Rad1**

**Qb6
Qxd4+**

0-1

All is not lost, however. Vishy has been involved in some games where he has been sidetracked into unfamiliar territory and found himself on the receiving end of similar treatment.

T Radjabov v V Anand

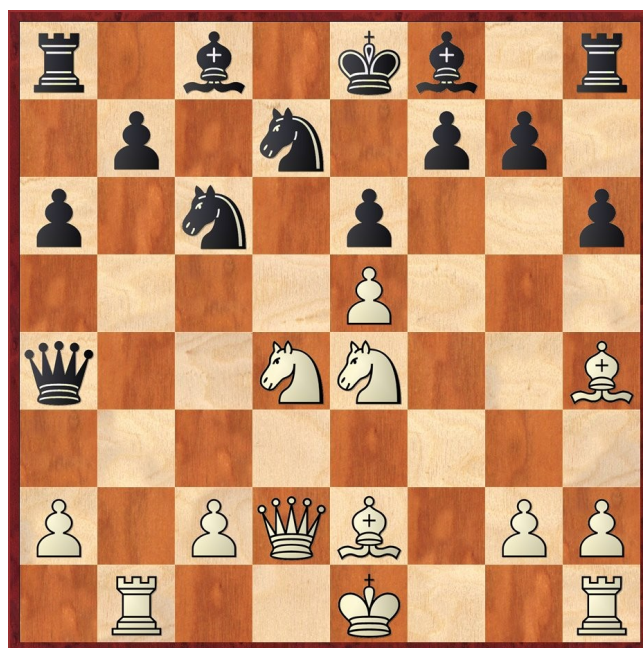
World Blitz Championship Rishon Le Zion, 2006

1 e4 c5 2 Nf3 d6 3 d4 cxd4 4 Nxd4 Nf6 5 Nc3 a6 6 Bg5 e6 7 f4 Qb6 8 Qd2 Qxb2 9 Rb1 Qa3 10 e5 dxe5 11 fxe5 Nfd7 12 Ne4 h6

So far, we have been following a typical Poisoned Pawn variation that is now generally thought to favour Black thanks to computer analysis exhausting many attacking options. For instance, a frequent try in this position is 13 Bb5 with great complications e.g. 13 ... hxg5 14 Rb3 Qe7 15 Nd6+ Kd8 16 Bxd7 Nxd7 17 Nc6+ bxc6 18 Qa5+ Nb6 19 Qxb6 Kd7 20 Rd3

13 Bh4 Qa4 14 Be2 Nc6

Both of Black's last two moves are questionable but this is one is definitely an error. 14 ... Bc5 or 14 ... g5 would have been better but can you exploit the text move?



15 Nxex6

g5

Obviously not 15 ... fxe6 16 Bh5+

16 Nf6+

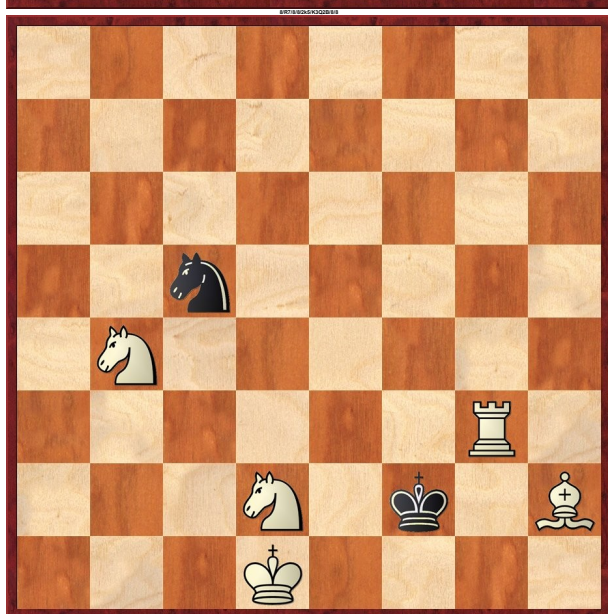
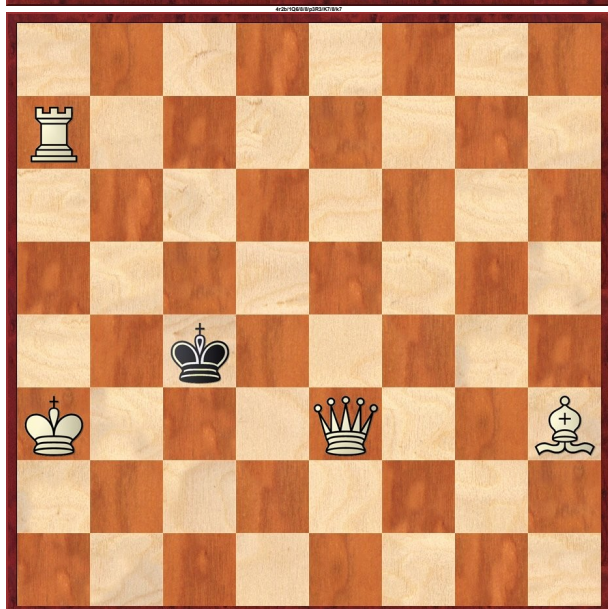
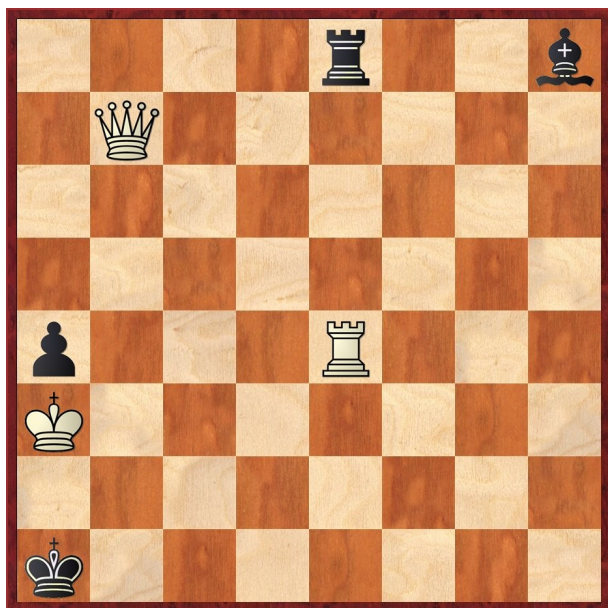
1-0

It is mate in two : 16 ... Nxf6 17 Nc7+ Ke7 18 Qd6#

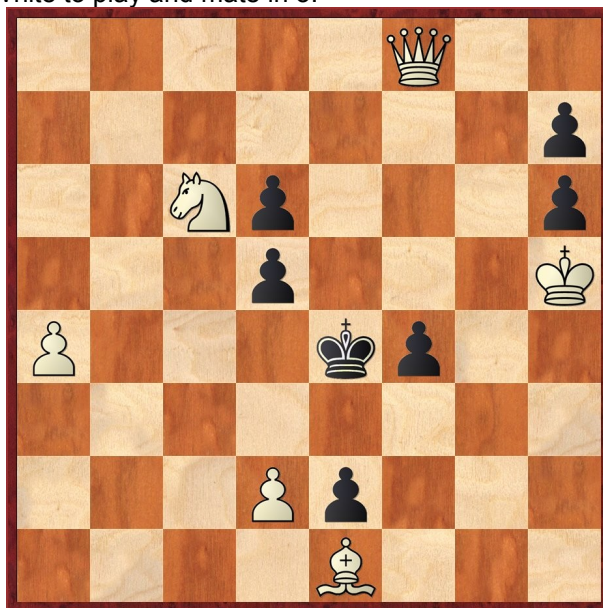
Isn't this the style in which you would wish to be remembered in 2009? All you need to do is learn the Sicilian Defence as thoroughly as Teimour Radjabov – or is that a dream for Christmas Future?

Puzzle Page

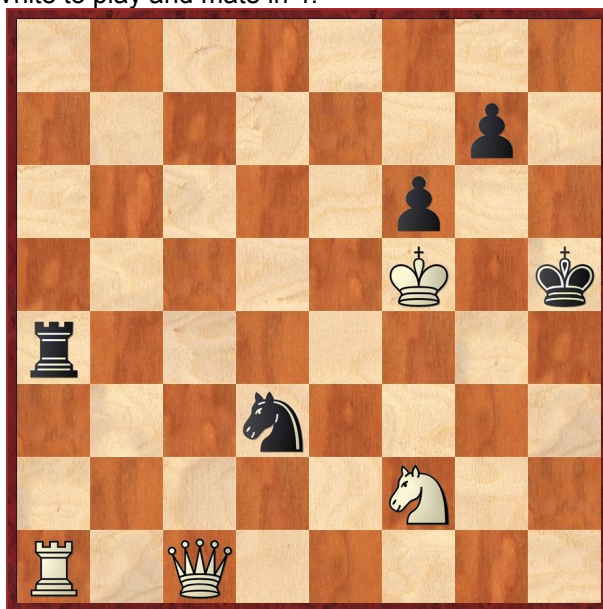
White to play and mate in 2.



White to play and mate in 3.



White to play and mate in 4.



White to play. Can he save his piece?

