

New Englander

Chess Club Update – November 2022

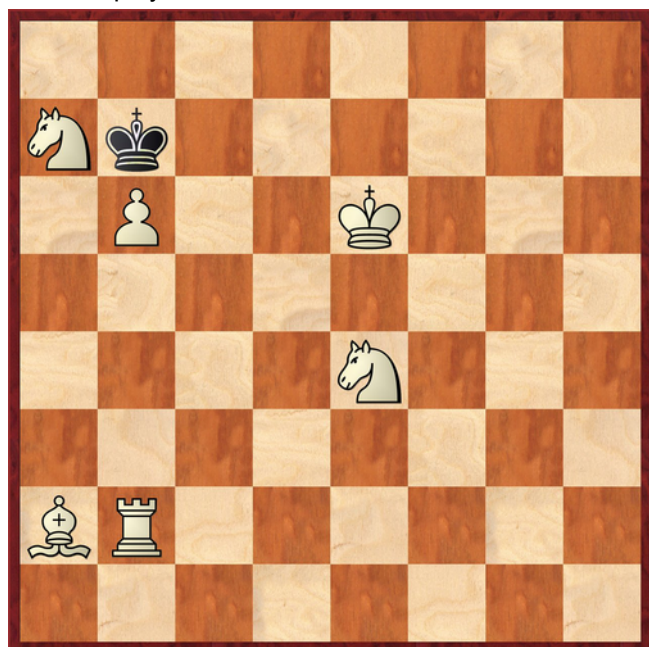
Chairman's Chatter

Welcome to winter! The clocks have changed and time passes. The past weeks have had a sad reminder that Covid is still about with Phil suffering a bad dose. We all wish him a full and speedy recovery. It means a delay to his *Match of the Month* that was in the final stages of preparation and the article in this edition is a stopgap affair written in something resembling a time scramble. It does, however, have the virtue of being hot off the press!

Paul Hanks

Puzzle Problem

White to play and mate in 2.



Last Month's solution (Katko 1927)

Position : Qbk1K3/1p2P3/8/3N4/8/8/8/8

1 Qa5 b5/6 2 Qa6# [1 ... Bc7 2 Qxc7#; 1 ... B other 2 Qd8#]

Diary Dates

13th November Patrick Ribbands EACU Team Championship at Bury St Edmunds

26-27th November Christie Hall, Wansford : new venue for the County Individual Championship. Entry form available from [here](#)

21st-22nd January '23 EACU Closed Championship

Website to Watch

The chess world must do its Christmas shopping in November! The most significant event is the World Senior Championship (50+ & 65+) will take place in Assisi, Italy from 15th to 26th November. Had you entered, you might enjoy 11 games of chess and walk away with up to €1200!

Result Round-up

Club Championship

White		Black	
Round 1			
P Walker	P	P	E Knox
P Hanks	P	P	P Turp
R Ilett	P	P	C Russell
Round 2			
E Knox (P)	P	P	P Spencer (1)
P Turp (P)	0	1	P Walker (P)
R Ilett (P)	1	0	N Wedley (1)
N Chedd	0	1	P Hanks (P)
Round 3			
P Spencer (1+P)	1	0	J Jennings (1)
P Walker (1+P)	0	1	N Chedd (0)
E Smith (0)	0	1	R Ilett (1+P)
E Knox (2P)	P	P	P Turp (0+P)
P Hanks (1+P)	1	0	C Russell (P)

Player	PS	PW	NW	PH	CR	ES	EK	JJ	PT	RI	NC	Total
P Spencer	X					1		1				2
P Walker		X							1		0	1
N Wedley			X					1		0		1
P Hanks				X	1						1	2
C Russell				0	X							0
E Smith	0					X		0		0		0
E Knox							X					
J Jennings	0		0			1		X				1
P Turp		0							X			0
R Ilett			1			1				X		2
N Chedd		1		0							X	1

Cambridgeshire League

New England A	4½	Warboys A	½
R Ilett	½	J Beck	½
P Walker	1	B Duff	0
P Hanks	1	R Mann	0
P Spencer	1	N Greenwood	0
C Russell	1	P Baddeley	0

Godmanchester	2½	New England B	1½
J Wright	0	P Spencer	1
A Rankine	1	N Chedd	0
M English	½	C Russell	½
J Barwise	1	J Jennings	0

Fenland Trophy

Peterborough A	1½	New England A	2½
A Nawalaniec	0	R Ilett	1
M Dunkley	0	P Walker	1
D Redden	1	P Spencer	0
B Rooney	½	E Knox	½

New England Grand Prix

Player	Champ	Ladder	League	Cup	Team 7000	Total	TPR*
P Spencer	2		3	0	½	5½	1807
R Ilett	2		1½	1		4½	2046
P Hanks	2		2		½	4½	1957
P Walker	1		1	1		3	1868
J Jennings	1				1	2	1258
N Wedley	1					1	1562
C Russell	0		½		½	1	1666
N Chedd	1		0			1	1659
E Knox			0	½		½	1353
P Turp	0				½	½	1760
E Smith	0					0	1028

* Tournament Performance Rating is approximate

Match of the Month

R Mann v P Hanks

Warboys A v New England A, Board 3; 26.10.2022

1 e4 e6
2 d3

The King's Indian Attack against the French Defence is a tricky system for Black. White can develop fairly mechanically and often builds a kingside attack if f2-f4 becomes playable.

2 ... c5

3 Nf3 Nc6
4 g3 d5
5 Nbd2 Nge7

Fritz's opening book gives this move a "?" which is probably deserved. 5 ... Bd6 is more natural and does not hinder the text move at a later stage. This is the choice of grandmasters and the game V Bologan (2665) v R Kasindzhanov (2681), France 2008 went 5 ... Bd6 6 Bg2 Nge7 7 0-0 0-0 8 Re1 Bc7 9 c3 d4. Only this last move is fated not to appear early in the current game.

6 Bg2 Ng6
7 0-0 Bd6
8 Re1

I was expecting 8 exd5 exd5 9 Re1+ Be6 and fortunately, White cannot continue 10 Ng5 with threats to both e6 and d5. Indeed, the latter discovered attack on my soft centre pawn remained a worry for several moves.

8 ... 0-0
9 h4

After the game, Richard suggested he played this flank advance too early but it had me running scared! I thought for over 15 minutes at this point. My strategy has been to control the e5 square so that Nf3-e5 and Nd2-f3 will never be an option. With the outlet on f3 occupied, the white knight on d2 will immobilise the queenside unless I create a hole for it on c4 by d5-d4. I needed to find a move that continues to tie down those knights and prevent any latent threat to d5 from the fianchetto.

9 ... h6

I was rather pleased that post-mortem computer analysis recommends this quiet move.

10 h5 Nge7

In my long think, I came to reject my original intention of 10 ... Nge5 11 Nxe5 Nxe5 because 12 f4 (not 12 exd5 exd5 13 Bxd5 Bg4 and 14 ... Bxh5) gives White just what he wants.

11 c3 f5

Here is an example of playing the man rather than the board. My opponent excels at siege warfare so this move aims to open the position and get away from his forte. The position is slanting towards the Stonewall formation of the Dutch Defence but fixing the weakness on h5 and a timely f5-f4 should reduce the drawing chances.

12 e5 Bc7
13 Qe2

I could not see the point of this when 13 d4 would be consistent with his previous moves.

13 ... Qe8
14 d4

After 14 Nh4 defending h5, Black has 14 ... f4 or 14 ... Bxe5.

14 ... b6

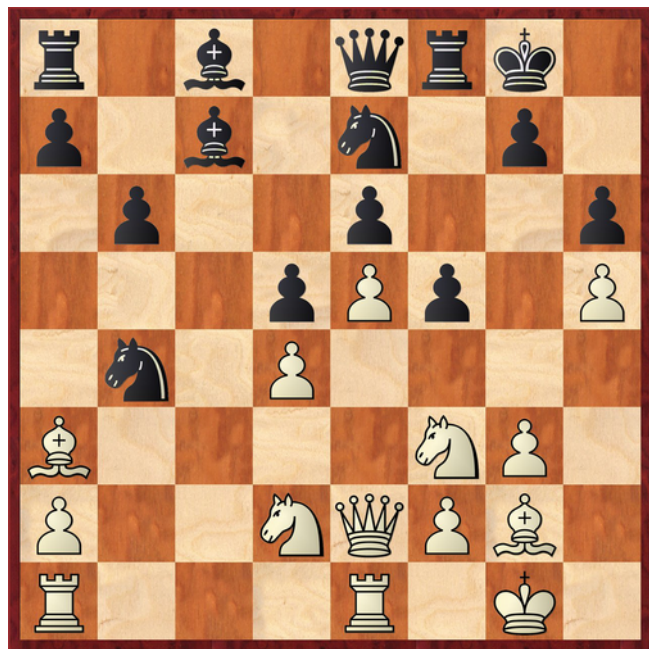
Timid! I open the long diagonal when I could accept the pawn 14 ... Qxh5 15 dxc5 f4 16 gxf4 Rxf4 either

with attacking prospects or pocketing the e5 pawn e.g. 17 Nf1 Re4.

15 b4

And now, a shock. White is offering a pawn to activate his dark-squared bishop.

15 ... cxb4
16 cxb4 Nxb4
17 Ba3



Would you be tempted by 17 ... Nc2?

17 ... Ba6

I get no material advantage from 17 ... Nc2 18 Rec1 Nxa1 (18 ... Nxa3 19 Rxc7) 19 Rxc7 Rf7 20 Rc1. 17 ... a5 and 17 ... Nec6 were valid alternatives. 17 ... Qa4 came to mind but the black queen can be chased around after 18 Bxb4.

18 Qd1 Nd3

This burns the boats. The knight has no immediate escape route but White has difficulty bringing his forces to focus on d3.

19 Re3

19 Re2 would block Bg2-f1 but it takes the sting from Black's reply.

19 ... f4
20 gxf4

20 Re2 may be an admission of error but was still preferable.

20 ... Nxf4

The white king will start to look exposed when the light-squared bishop is exchanged.

21 Rc1 Rc8

21 ... Bd8 was stronger. It allows the black queen to join the invasion of the kingside. 22 Nh4 (22 Nf1 might provide some cover for the king but 22 ... Nf5 23 Bxf8 Nxe3 24 fxe3 Ne2+) 22 ... Nf5 23 Nxf5 Rxf5 wins the h pawn with a kingside initiative.

22 Bf1 Bxf1

23 Kxf1 Rf5

I contemplated 23 ... Qxh5 with the intention of 24 ... Qh1+ 25 Ng1 Qg2+ 26 Ke1 Qxg1+ etc. 24 Ng1 seemed to defend though the computer points out 24 ... Qh2 25 Ndf3 Qg2+ 26 Ke1 b5 when the white king is still caught in the crossfire.

24 Rec3 Qb5+

It was this possibility that dissuaded me from 23 ... Qxh5.

25 Kg1

Obviously not 25 Ke1 Ng2#. Interposing with 25 Nc4 merely steps into a deadly pin after 25 ... Bd8.

25 ... Ne2+
26 Kg2

The computer points out an amusing alternative after 26 Kh2 Rxh5+ 27 Kg2 Ng6 28 Nh2 Ngf4+ 29 Kf3 (29 Kf1 Rxh2; 29 Kh1 Nxc1 30 Bxc1 Qe2 31 Qxe2 Nxe2 32 Rc2 Nxd4 33 Rc3 Rxh2+ 34 Kxh2 Bxe5+) 29 ... Rh3+ 30 Kg4 h5+ 31 Kg5 Bd8+. Who needs a queen?

26 ... Nxc3
27 Rxc3 Qd7

By now, I had decided to play it safe and chose the solid option whereas 27 ... Bd8 and 27 ... Qe8 were viable and more aggressive.

28 Nh4 Rf7

Ditto but here I missed tactics such as 28 ... Rg5+ 29 Kh2 (29 Kf3 Nc6 30 Nb3 Bxe5; 29 Kf1 Qb5+) 29 ... Bxe5+.

29. Qg4 Bd8
30 Rxc8

If White avoids exchanges and seeks kingside complications with 30 Rg3, I can defend with 30 ... Rc2 31 Ndf3 Nf5 32 Nxf5 Rxf5 with excellent counterattacking chances.

30 ... Qxc8
31 Bxe7 Bxe7
32 Ng6 Bf8
33 Nf4

Building pressure against e6 is logical but flawed. Instead, 33 Nf3 prevents progress on the kingside by Rf7-f5-g5 but with all White's forces on that flank, I can start to advance my majority with 33 ... b5.

33 ... Qc1 0-1

The knights are skewered.

Paul Hanks